



# National Council of SPCAs, South Africa

Welfare Registration Number: 003-189 NPO

## Celebrating Mandela Day 18 July 2023

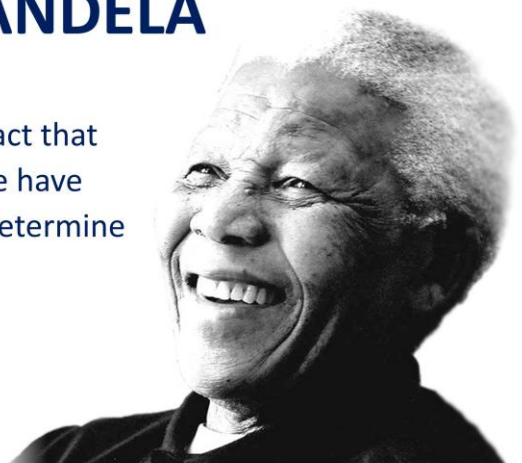


## NELSON MANDELA

“What counts in life is not the mere fact that we have lived. It is what difference we have made to the lives of others that will determine the significance of the life we lead.”



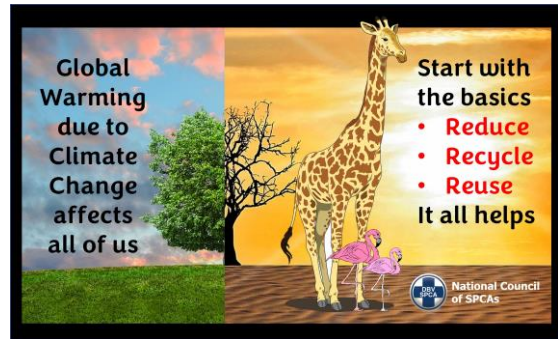
**NSPCA Patron-in-Chief**



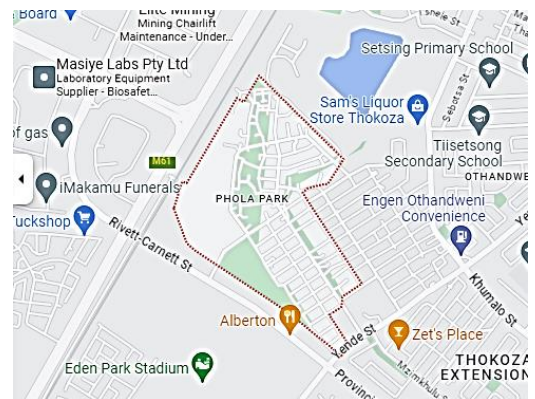
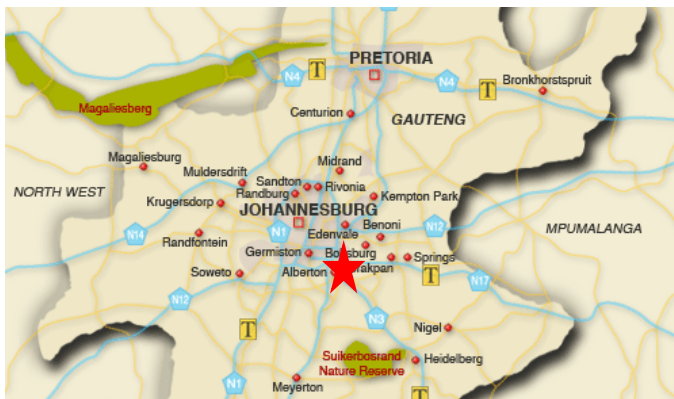
## Introduction

On the 10<sup>th</sup> Anniversary of the passing of our Patron-in-Chief Nelson Mandela we again seized the opportunity to help a needy community in his memory.

The Nelson Mandela Foundation theme for this year was “Climate, Food & Solidarity and reflects some of the most urgent challenges facing people worldwide” with the focus on “dismantling poverty and inequality by taking action against climate change and creating resilient food environments”.



The NSPCA welcomed the theme of the Nelson Mandela Foundation and promoted this on our social media platforms as well as preparing for an outreach day in a community in need of assistance.



Our target area for the days activities was in Phola Park, Thokoza in Alberton. A community with many marginalised people (especially the elderly and youth) and animals.



The NSPCA administration staff work very hard behind the scenes and don't often have the satisfaction of dealing directly with the beneficiaries. So this was an opportunity for them to join the Inspectors and spend some time in the field.

## Preparation and Community Engagement



Following the theme of the Nelson Mandela Foundation our team had prepared some vegetable seedlings for distribution as well as animal supplies of food, blankets and educational material. The team had a lot of supplies to load into the vehicles as well as health care medication and supplies.



When the team arrived they were met by many community members who were eager to engage and receive support. Some of them were already waiting with their pets.

## Food Security – Community Gardens



The women in this community struggle daily to care for their families and provide nutritious meals

Selected vegetables, including tomatoes, onions and spinach can add value to a meal and save money. They can be grown in pots or small gardens and are easy to maintain and care for and were gratefully received by community members.



## Community Assistance

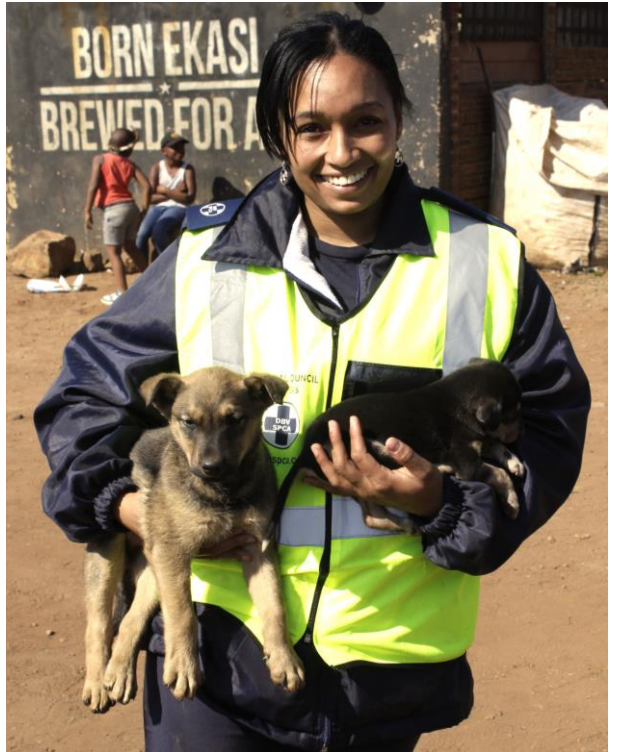


Families came out bringing their animals to be assisted and the Inspectors were available to help them with their concerns. Home inspections were also undertaken and Inspectors provided the necessary guidance to owners regarding suitable animal care and welfare.



Engaging the youth and distributing education material is a critical component of community outreach so that community members are informed and provided with resources to help them help themselves.

## Celebrating Nelson Mandela Day



In the spirit of Mandela Day, the outreach was brief and positive and well received by community members in Phola Park.

Animals, owners and NSPCA staff all benefitted from our actions to celebrate our Patron-in-Chief Nelson Mandela.

**THANK YOU FOR YOUR SUPPORT**